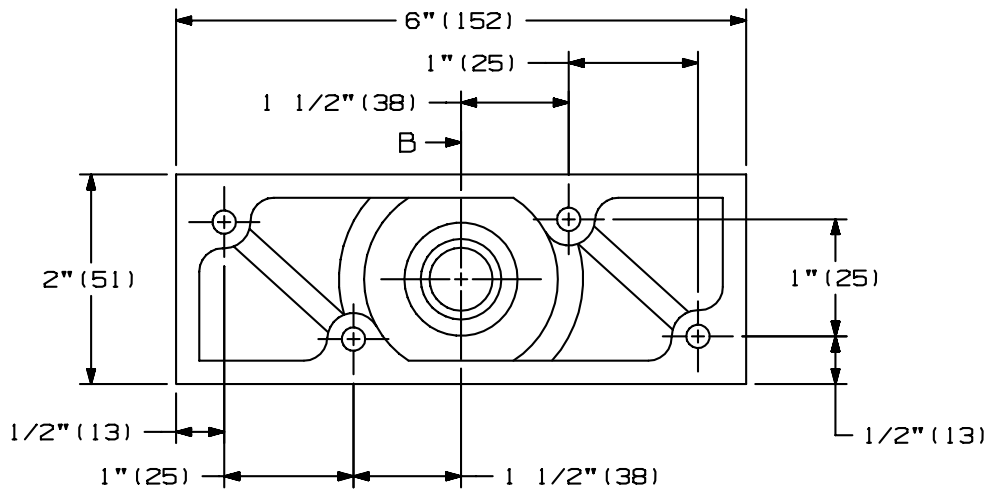
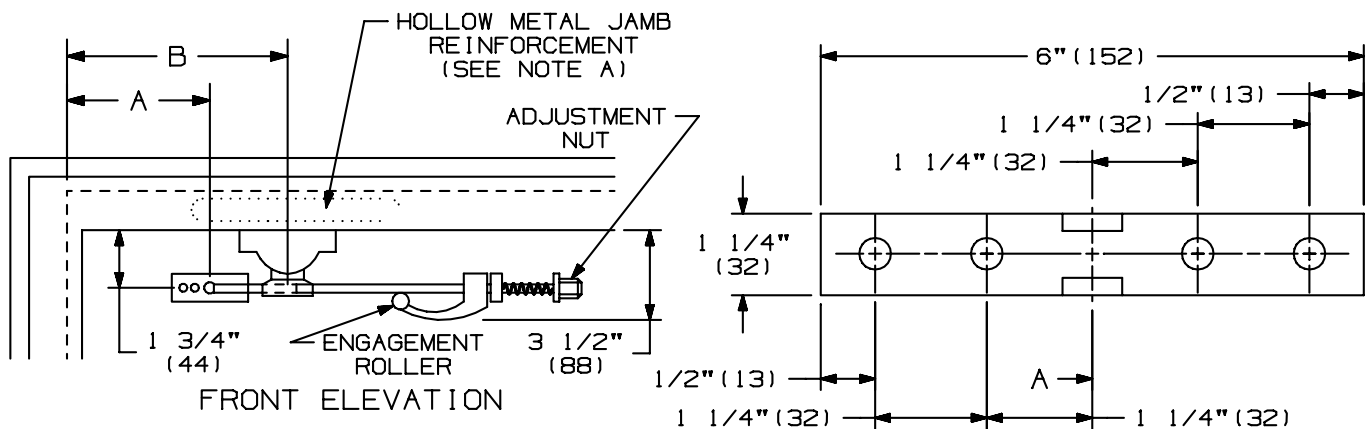


2. A. LOCATE "B" DIMENSION ON THE STOP. NOTE THAT THE "B" DIMENSION IS MEASURED FROM THE CENTERLINE OF THE HINGE AS SHOWN.
- B. FOR METAL FRAMES, USE A F DRILL AND A 5/16"-18 TAP IN 4 PLACES. FOR WOOD FRAMES, DRILL A 1/4" PILOT HOLE IN 4 PLACES.



JAMB BRACKET

3. A. LOCATE "A" DIMENSION ON THE DOOR. NOTE THAT THE "A" DIMENSION IS MEASURED FROM THE CENTERLINE OF THE HINGE AS SHOWN.
- B. CHOOSE THE TYPE OF FASTENERS BEING USED TO MOUNT THE DOOR BRACKET TO THE DOOR. MOUNTING HOLES SHOULD BE PREPARED IN THE FIELD.
 1. USING SCREWS, FLAT WASHERS, SPLIT WASHERS, AND HEX CAP NUTS WHICH ARE PROVIDED, DRILL 1 3/4" (44) DOWN FROM STOP 11/32" (13) DIAMETER THROUGH DOOR IN 4 PLACES.
 2. OPTIONAL, USING SEX BOLTS, DRILL 1 3/4" (44) DOWN FROM STOP 1/2" (13) DIAMETER THROUGH DOOR IN 4 PLACES. NOT PROVIDED STANDARD, BUT AVAILABLE ON REQUEST.



DOOR BRACKET

4. A. INSTALL JAMB BRACKET ON THE STOP.
- B. INSTALL THE DOOR BRACKET ON THE DOOR.

79 SERIES SURFACE OVERHEAD
HOLDER INSTALLATION TEMPLATE



NOTE: DIMENSIONS IN () ARE MILLIMETERS.

TEMPLATE NUMBER: INST. 79. PG2_1

DATE: 04-15-04

MOUNTING GROUPS 1 & 2
79 SERIES SURFACE OVERHEAD STOP & HOLDER
CAUTION: "A" & "B" DIMENSIONS ARE MEASURED FROM THE
CENTERLINE OF PIVOT, NOT EDGE OF DOOR
FOR DEAD STOP ADD 7/8" (22) TO THE "A" AND "B" DIMENSIONS
HO=HOLD-OPEN FOR HOLDERS, OPENING FOR STOPS

DEGREE	85 HO		90 HO		95 HO		100 HO		105 HO		110 HO		BAR LENGTH
	A	B	A	B	A	B	A	B	A	B	A	B	
792	IN. 23 1/16-27	4 1/4	9 5/16	4	8 7/8	3 3/4	8 1/2	3 1/2	8 1/8	-	-	-	17 15/16
	mm	108	237	102	225	95	216	89	206	-	-	-	456
793	IN. 27 1/16-33	6 1/16	11 1/16	5 13/16	10 7/16	5 7/16	10 1/16	5 1/8	9 11/16	4 13/16	9 3/8	4 9/16	20 5/8
	mm	154	281	148	265	138	256	130	246	122	238	116	524
794	IN. 33 1/16-39	8 5/8	13 5/8	8	13 3/16	7 9/16	12 3/4	7 1/16	12 7/16	6 1/2	12 5/16	6 1/16	23 5/16
	mm	219	346	203	335	192	324	179	316	165	313	154	592
795	IN. 39 1/16-45	11 1/4	16 1/8	10 11/16	15 7/16	10 1/8	14 7/8	9 1/2	14 9/16	9 1/16	14 1/8	8 11/16	26 13/16
	mm	286	410	271	392	257	378	241	370	230	359	221	681
796	IN. 45 1/16-54	-	-	13	18 1/8	12 7/16	17 3/8	11 7/8	16 3/4	11 1/2	16 1/16	10 7/8	30 5/16
	mm	-	-	330	460	316	441	302	425	292	408	276	770
792	IN. 27 1/16-33	4 9/16	9 1/16	4 1/4	8 13/16	4	8 9/16	3 11/16	8 3/8	3 9/16	8 1/8	-	17 15/16
	mm	116	230	108	224	102	217	94	213	90	206	-	456
793	IN. 33 1/16-39	6 1/8	11	5 3/4	10 5/8	5 1/4	10 1/2	5 1/16	10 1/8	4 13/16	9 7/8	4 11/16	20 5/8
	mm	156	279	146	270	133	267	129	257	122	251	119	524
794	IN. 39 1/16-45	8 3/8	13 13/16	8	13 1/4	7 7/16	12 15/16	7	12 5/8	6 15/16	12 1/16	6 5/8	23 5/16
	mm	213	351	203	337	189	329	178	321	176	306	168	592
795	IN. 45 1/16-51	11	16 3/8	10 7/16	15 3/4	9 3/4	15 3/8	9 1/2	14 3/4	9 1/16	14 3/8	8 13/16	26 13/16
	mm	279	416	265	400	248	391	241	375	230	365	224	681
796	IN. 51 1/16-57	13 9/16	19	12 13/16	18 5/16	12 1/4	17 5/8	11 13/16	17	11 5/16	16 1/2	10 7/8	30 5/16
	mm	344	483	325	465	311	448	300	432	287	419	276	770
MOUNTING GROUP #1						MOUNTING GROUP #2							

79 SERIES SURFACE OVERHEAD
HOLDER INSTALLATION TEMPLATE



NOTE: DIMENSIONS IN () ARE MILLIMETERS.

TEMPLATE NUMBER: INST. 79 . PG3_1

DATE: 04-15-04